

TEEN CHALLENGE

ADULT CENTERS OF TEXAS, INC

From the desk of our Men's director...

This morning I woke up on a cold winter morning, but I kept having this old song running through my mind "Oh, what a beautiful morning, oh, what a beautiful day...". In the Old Testament in Song of Songs 2:11-13:

"See! The winter is past; the rains are over and gone. Flowers appear on the earth; the season of singing has come, the cooing of doves is heard in our land. The fig tree forms its early fruit; the blossoming vines spread their fragrance. Arise, come, my darling; my beautiful one, come with me. The time for singing has come."



As we are coming into the time of spring and of Easter, imagine for a moment what it would be like if the long hard winter never ended. This is what the apostle Paul tells us that life would be like if Jesus Christ had not been raised from the dead on Easter Sunday; death without life (I Corinthians 15). Always winter; never spring.

That is what it was like in many of the lives of the men and women that have come here. We, however, share that Easter means "Death has been swallowed up in victory." It is Christ's victory as proof of the Father's satisfaction, but not just His; ours as well.

So, as we come to the end of a long winter, let us all rejoice in the Resurrection of Christ and the rebirth of new lives being transformed here on our campus. For the season of singing has come.

May God bless each and everyone of us.

RANDY NEFF

GRADUATES

February



Tyler Dunham



Rayna Fuentez



Chris Gibson

Colossians 2:6-7

⁶As you therefore have received Christ Jesus the Lord, so walk in Him, ⁷rooted and built up in Him and established in the faith, as you have been taught, abounding in it with thanksgiving.

Baptisms



Julie Hicks



Jaime Tripp



Jennie McCoy



Madison Archer



Christa Whaley



Natasha Lobendahn

NEWS FLASH

We have recently updated our digital footprint with a new website:

teenchallengeadult.com

You will be able to keep up with our events, contact the staff, make a donation, read through past newsletters, and, if necessary, begin the process of enrollment.



4900 Green Tree Blvd.
Midland TX 79707



Monday, April 27th

REGISTRATION FROM 7:00 - 8:00 A.M.

SHOTGUN START - 8:30 A.M.

SPONSORSHIP OPPORTUNITIES:

PLATINUM SPONSORSHIP:

4 TEAMS OF 4

\$10,000

Includes: Prime location of an individual sign (name & logo) as well as on the sponsor banner.

GOLD SPONSORSHIP:

3 TEAMS OF 4

\$5,000

Includes: Company name & logo on an individual sign & on the sponsor banner.

SILVER SPONSORSHIP:

2 TEAMS OF 4

\$2,500

Includes: Company name on a sign at a hole & on the sponsor banner.

CORPORATE SPONSORSHIP:

1 TEAM OF 4

\$1,000

Includes: Company name on a sign at a hole & on the sponsor banner.

STANDARD ENTRY:

1 TEAM OF 4

\$600

HOLE SPONSORSHIP:

\$400

Includes: company name on a sign at a hole & on the sponsor banner

INDIVIDUAL ENTRY:

\$150

We will be giving away:

Great GOLF GEAR!

Lots of Awesome Gifts, Door Prizes, welcome gifts and more!

Raffle for Major Prizes

Contest

Longest Putt

Closest to the Pin

Longest Drive



To keep you at the top of your game!

Free Starbucks Coffee and breakfast burritos! Plenty of ice cold Gatorade & water will be served to you to keep you refreshed.

Lunch is also included!!!

A delicious BBQ meal will be provided by Teen Challenge after the Tournament.

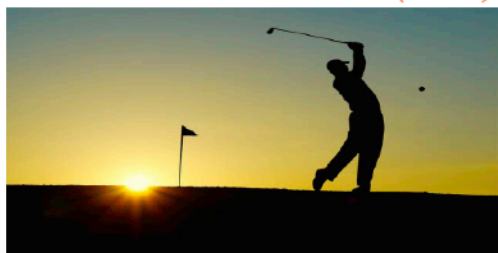


Register Today!

www.teenchallengeadult.com

or call at: (432) 687-0348

a hole in one wins a vehicle!



Gift certificates and prizes will be awarded after lunch.

Call the office to Pay with a Credit Card or send a check to:

P.O. Box 251
Midland, TX 79702
(notate: Golf Tournament)



WANTED

Chili Cooks

Teen Challenge Adult Center

on March 21st from 9 a.m. till 2 p.m
will be hosting an Open House and
Chili cook off.

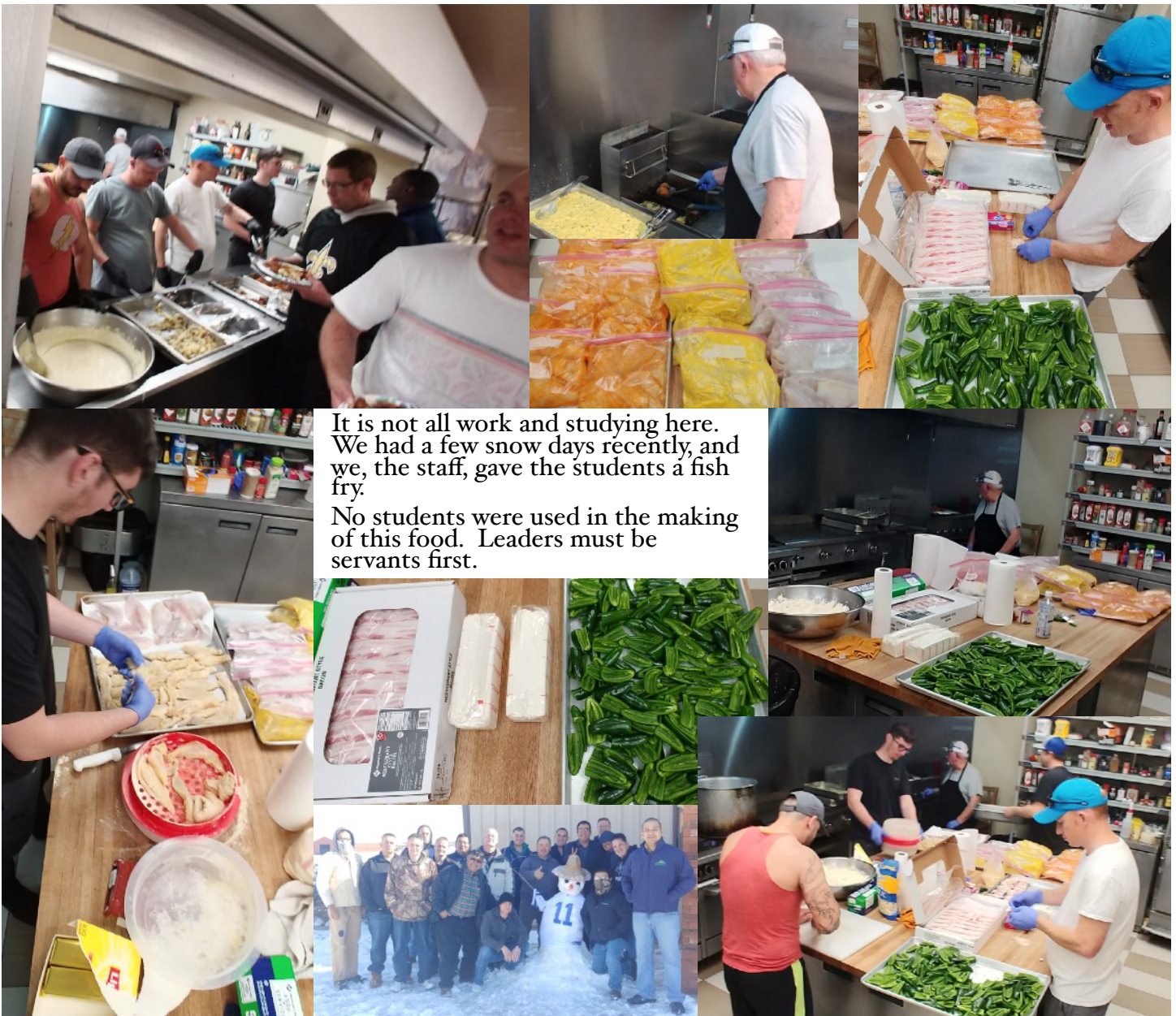
Participants can sign-up online at
teenchallengeadult.com
or call 432-687-0348

Judging will take place at 11:45
Lunch will be at 12:00

Event open to the public. So, come one,
come all.

Inflatables and
face painting for the kids.



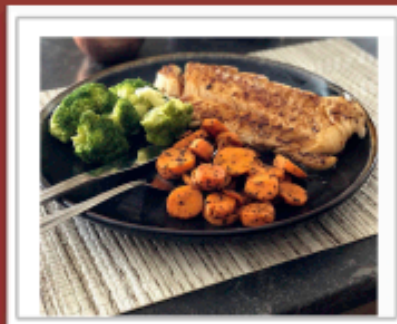


We also put the finishing touches on our third classroom and education offices.



Teen Challenge Catering

*Serving the Lord
one meal at a time.*



*"If more of us valued food
and cheer and song
above hoarded gold, it
would be a merrier
world."*

— J.R.R. Tolkien

What we offer

Meats:

Brisket, steak, chicken, salmon, cod, catfish, tilapia, shrimp, pork chops, pork tenderloin, pork shoulder, hamburgers, hotdogs, etc.

Sides:

Mash potatoes, french fries, corn, corn on the cob, green beans, broccoli, vegetable medley, dressing (stuffing), rice of any sort, side salads, potato salad, coleslaw etc.

Dessert:

Cobbler (pecan, cherry, or peach), Pumpkin pie, apple pie, cheese cakes, brownies, etc.

Drinks:

Sweet and unsweet tea, lemonade, punch, soda, coffee, hot chocolate, water, etc.



These are just some of the things that we can offer you. If there is a specific dish that you would love to enjoy, please ask. The possibilities are endless.

What we can offer to you:

We can cater to just about any number of people. We have done caterings as small as 10 people and others as great as 1100 people. So number is not in issue with us. Please feel free to call for pricing on a menu that you choose.

With us, you will know that not only will you get great quality food, but also amazing service. Here are just a few examples of different caterings that we can offer you.

- Banquets
- Work lunch or dinners
- Weddings
- Birthdays
- Church gatherings
- Board meetings
- Thanksgiving dinner
- Christmas dinner
- Super bowl parties
- 4th of July BBQ's
- You name it, we can do it.

If all you require is drop off service, we can accommodate that as well.



Phone: (432) 687-0348



P.O Box 251, Midland, TX 79702
Phone: (432) 687-0348
Fax: (432) 687-0357
Email: admin@teenchallengepb.com
Website: www.teenchallengepb.com

DAVID DAY - Executive Director
RANDY NEFF - Men's Director
YVONNE BEJIL - Women's Director
TYLER MURPHY - Administrative Director
KEELY WOLFE - Office Manager

BOARD OF DIRECTORS

Bobby Watson - President
Jeffrey Thomason - Vice-President
Sheldon Riley - Secretary
Scott Young - Treasurer
Mike Hanks
Steve Becker

NONPROFIT
U.S. POSTAGE
PAID
PERMIT NO.10
MIDLAND, TX
79711

Address Label



VS.



As you know it takes money to keep Teen Challenge going. In order to be better stewards of what God has directed you all to donate to us, we are now sending our newsletter by email for those who would prefer that. If this is you, please email us at

newsletter@teenchallengeadult-tx.org

or give us a call at **432-687-0348**.

If you no longer wish to receive our newsletter, please let us know.